



SOUTH HILL PRIMARY SCHOOL

'Building Character, Learning Together'

Headteacher: Miss J Wellbelove BA (Hons) PGCE

Senior Assistant Head: Mrs J Donley

Heath Lane
Hemel Hempstead
Hertfordshire
HP1 1TT

Tel: 01442 402127

email: admin@southhill.herts.sch.uk

website: www.southhill.herts.sch.uk

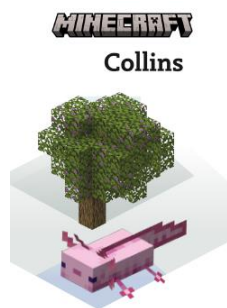
10th March 2025

Dear parents and carers

British Science Week – Change and Adapt competitions

This week, the whole school is taking part in British Science Week with the theme of Change and Adapt. We had an assembly with an exciting experiment this morning and will be carrying out two experiments in class to explore these themes and more details about this will be on our ClassDojo pages.

We are also launching two competitions. Please see details below.



Competition 1 is an in-house Minecraft competition. Pupils need to follow the steps attached to create an ideal environment to raise a virtual axolotl. On this occasion, please email competition entries to Mrs Farmery via the school office using admin@southhill.herts.sch.uk. This can be a screenshot of your child's entry.

Competition 2 is an external competition for British Science Week run by UCL. Paper entries can be given to your class teacher who will pass them to Mrs Farmery. The top five entries will be submitted by the school online.



The deadline for both competitions is Monday 24th March 2025.

Yours sincerely

C Farmery

Mrs C Farmery
Assistant Headteacher



Suitable for older primary children, aged 7-11, or those working at this level.

MINECRAFT: AXOLOTL ADAPTATIONS

Animals are perfectly adapted to survive in their habitat. In this activity, you will use Minecraft to build your own axolotl pond with all of the features of a lush cave, which is the axolotl's natural habitat in Minecraft.

In real life, axolotls are endangered and are only found wild in a lake complex in Mexico.

🕒 1 hour

📋 Kit list

Minecraft
any version and a device that allows you to play

Notepad or piece of paper

A pen or pencil

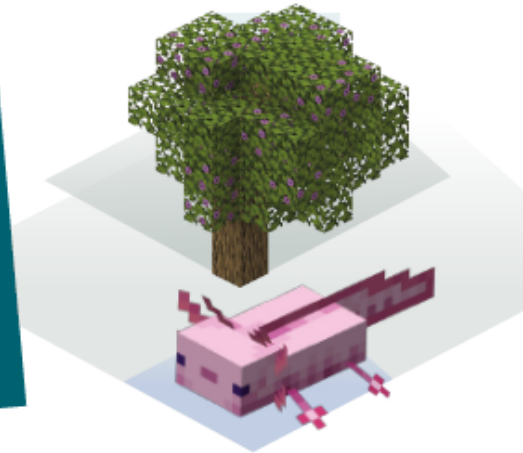
© 2024 Mojang AB. All Rights Reserved. Minecraft, the Minecraft logo, the Mojang Studios logo and the Creeper logo are trademarks of the Microsoft group of companies.

📖 Instructions

- 1 Find an azalea tree. These can be found most commonly in forested biomes.
- 2 Dig down to find a lush cave – where Minecraft axolotls live!
- 3 Explore the lush cave and note down the features of the habitat.
- 4 Find a wild axolotl – or two – and catch them in a water bucket.
- 5 Find somewhere above ground to build your own axolotl pond.
- 6 Dig a shallow hole for the pond. Make sure you have a slope up to the ground, as axolotls leave the water for short periods of time.
- 7 Fill your pond with water using a bucket.
- 8 Remember - animals are perfectly adapted to the habitat they live in. You should include all the features of lush caves to make sure your axolotls feel right at home!
- 9 You can even breed your captive axolotls by feeding a pair of axolotls with buckets of tropical fish. Then reintroduce them into lush caves to increase the wild population.

MINECRAFT

Collins



➤ Next steps

If you finish your axolotl pond, you could build an axolotl laboratory to study these incredible creatures.

You can also print these free worksheets to learn more about animal adaptation: <http://bit.ly/MinecraftBSW>

Think about adaptation and if humans should help endangered species to reproduce.

🏠 At home

Do some research on real-life axolotls.

They are fascinating creatures!

➤ What is unique about their life cycle?

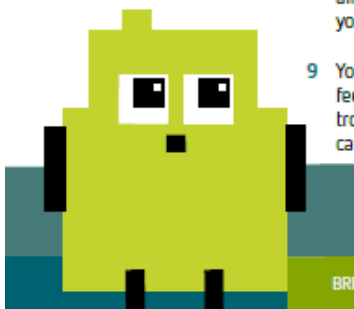
↔ Career options

➤ A conservationist acts to protect and preserve wildlife and the environment.

➤ An evolutionary biologist studies how species have evolved and changed over time.

📖 Skills unlocked

Imaginative, curious





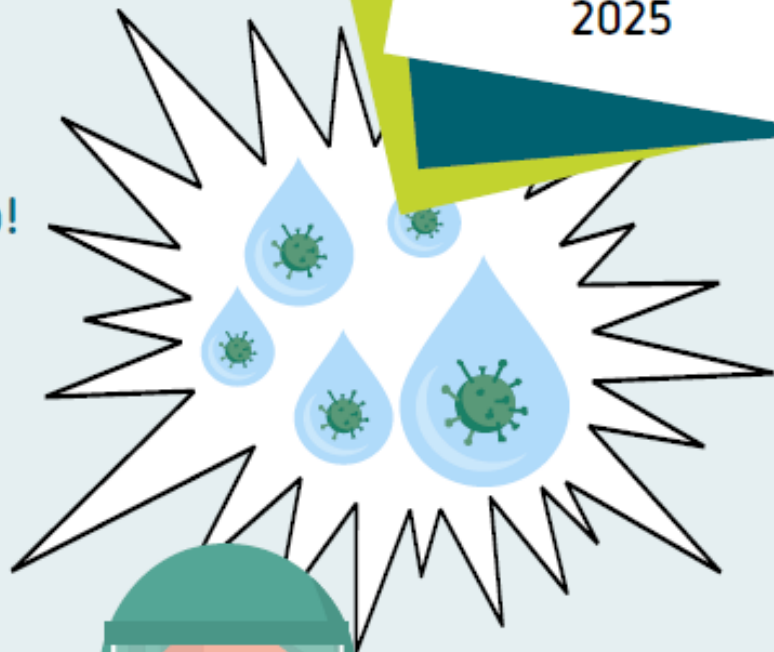
Competition: The scientists from UCL need your help!

i Instructions

Choose an indoor public space where you often spend time – this could be an area where you learn, or a place you visit regularly like a library, café or cinema. Do you think the air in this space is healthy and clean? Why? Come up with an idea or invention to change the air in your chosen space, making it healthier to breathe. How will it work? Could it be used in other public places too?

You might come up with a brand-new idea, or you might like to think about a new way of using something that already exists. The researchers at UCL have considered lots of different ideas for improving air quality and preventing the spread of viruses in hospitals. For example, you could think about face masks, curtains and screens, ventilation, fans or air filters.

You may like to do some research into how viruses spread to give you some ideas. Have a think about the science behind your idea. How will it work? How will it be made and used?



Make your poster

Think about how you present your idea to make sure it is clear and easy to understand. You could create a diagram or set of instructions, or you might like to develop an eye-catching poster! Will you include pictures, graphs or other illustrations?

Entries must be A4 or A3 in size and you'll need to be able to take a photograph of your work so it can be sent to us online for judging.

Send us your entry

Once pupils' entries are complete, take a photo of them and complete the online form to submit the top 5! For more details, along with the full set of poster competition rules and tips, check out our website: britishscienceweek.org/plan-your-activities/poster-competition 🌟